

Tipos de Função

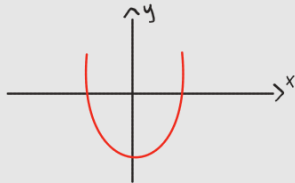


PAR



$$f(x) = f(-x)$$

Ex: $f(x) = x^2 - 1$

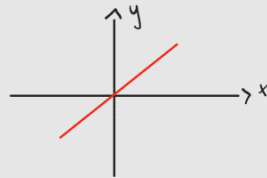


ÍMPAR



$$f(-x) = -f(x)$$

Ex: $f(x) = x$

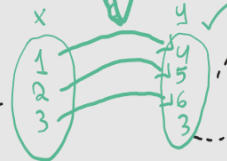


INJETORA



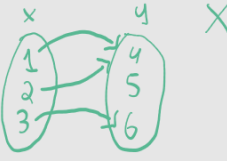
Imagem distinta

Domínio

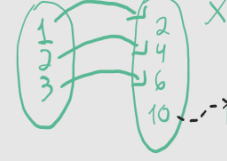
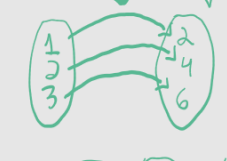


-> contra domínio

-> Pode sobrar



SOBREJETORA

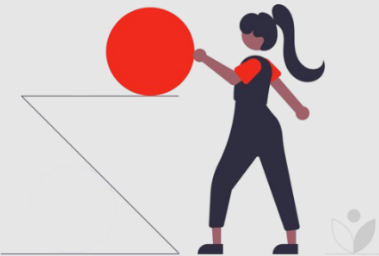
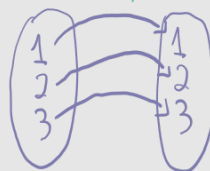


-> Não pode sobrar

BIJETORA



Injetora +
Sobrejetora



FaculMatch

ENCONTRE A FACULDADE PERFEITA PARA VOCÊ